

SHEET INDEX

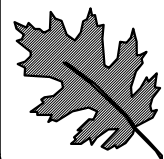
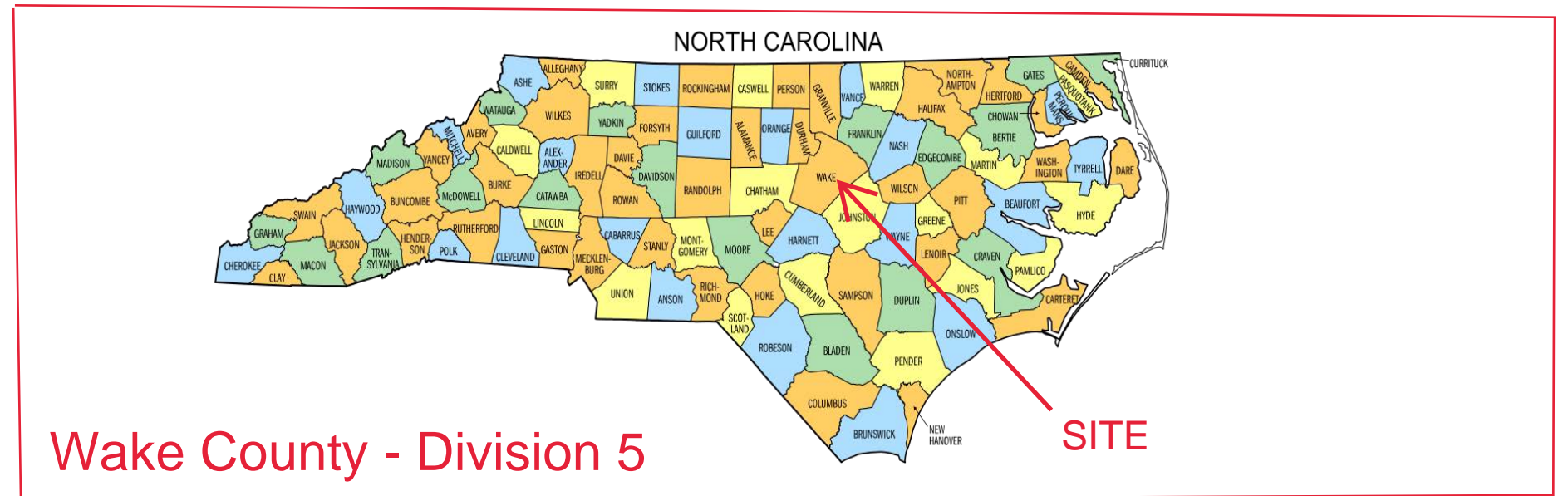
Cover Sheet	L-1
Existing Site Master Plan	L-2
Area A Streetscape Plan	L-3
Area B Planting Plan	L-4
Area C Planting Plan	L-5
Area D Planting Plan	L-6
Area E Planting Plan	L-7
Area F Planting Plan	L-8
Planting Detail	L-9



SITE VICINITY MAP LOCATION

PLANT MATERIAL LIST

KEY	QUANTITY	BOTANICAL NAME	COMMON NAME	CONDITIONS
ES	8	Ilex x attenuata 'Eagleston'	Eagleston Holly	25 Gallon, 7' to 8' High
SO	17	Quercus coccinea	Scarlet Oak	25 Gal. or B/B 2" Cal. 8' High
TJ	65	Juniperus virginiana 'Taylor'	Taylor Juniper	15 Gallon, 5' to 6' High
CM	3	Lagerstroemia 'Dynamite'	Crape Myrtle Red or Eq.	15 Gallon, 5' High
PP	11	Prunus cerasifera	Purple Leaf Plum	25 Gal. or B/B 8' High
CJ	42	Ilex Hybrid 'HL 10-90'	Christmas Jewel Holly	10 Gal. 3' to 4' High
OH	20	Ilex hybrid 'Magland'	Oakland Holly	10 Gallon, 4' High
SL	189	Ligustrum sinense 'Sunshine'	Sunshine Ligustrum	3 Gallon, 18" to 24" High 3' O.C.
ON	41	Nandina domestica 'Seika'	Obsession Nandina	3 Gallon, 14" to 18" High 3' O.C.
GJ	48	Juniperus Procumbens 'Nana'	Japanese Garden Juniper	3 Gallon, 3' O.C.
KA	115	Abelia x grandiflora 'Kaleid.'	Kaleidoscope Abelia	3 Gallon 3' O.C.
CH	26	Ilex cornuta 'Carissa'	Carissa Holly	3 Gallon, 3' O.C.



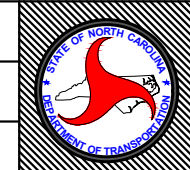
NCDOT – ROADSIDE ENVIRONMENTAL UNIT
 AESTHETIC ENGINEERING SECTION
 1557 MAIL SERVICE CENTER RALEIGH NC 27699-1557
 PH: 919-707-2935 FAX: 919-715-2554
<http://www.ncdot.gov>

Century Center Building
 Landscape Improvement Project

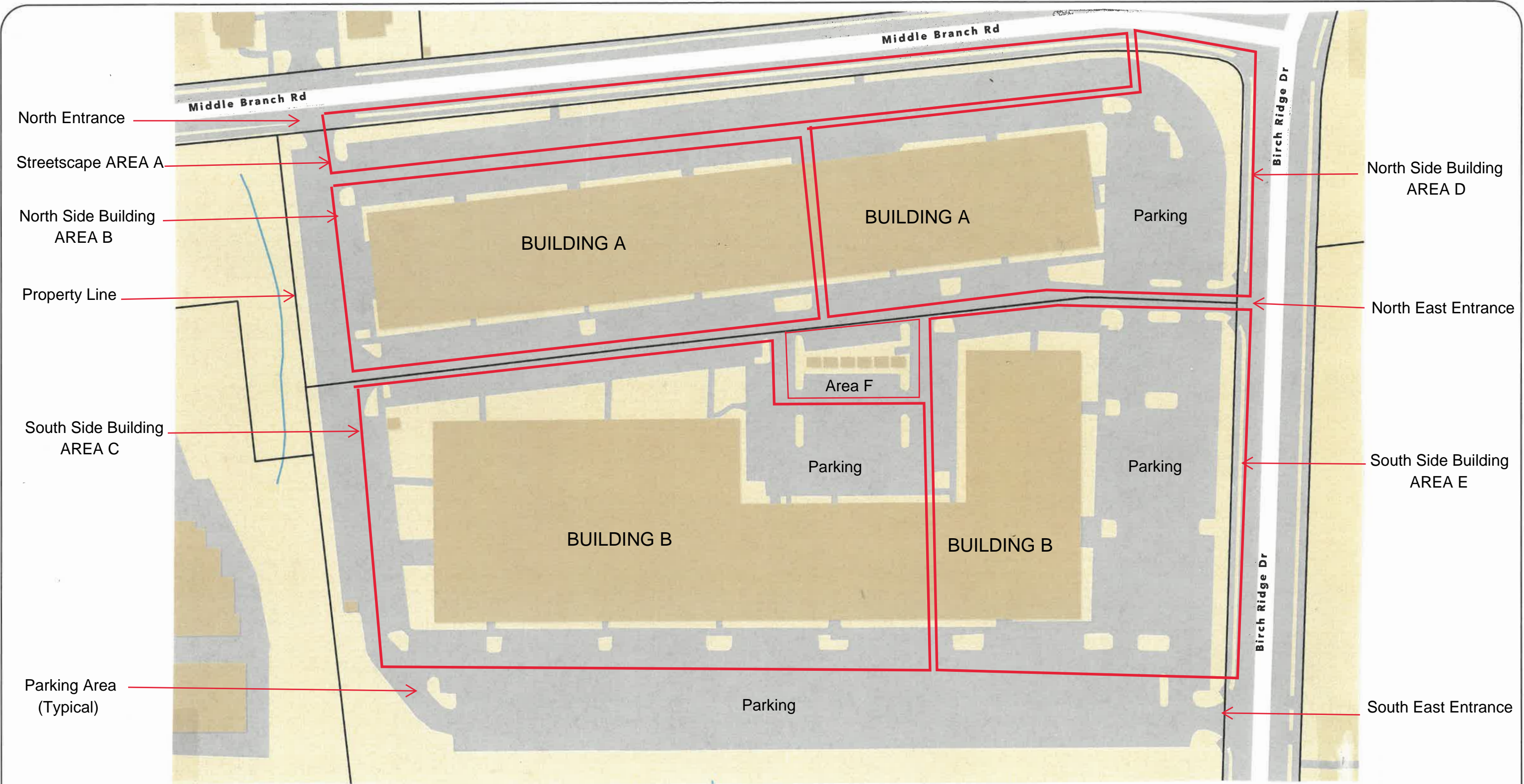
SHEET DESCRIPTION:


PREL. DESIGN DATE :	MAY 30, 2024
FINAL DESIGN DATE :	JULY 26, 2024
Landscape Architect	Azad Atashi

Cover Sheet
 Phone: (919)707-2951



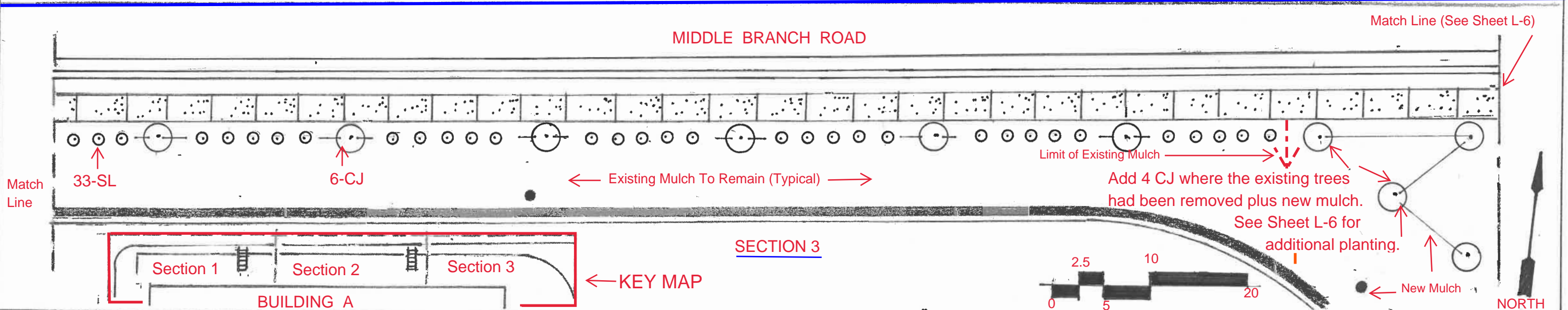
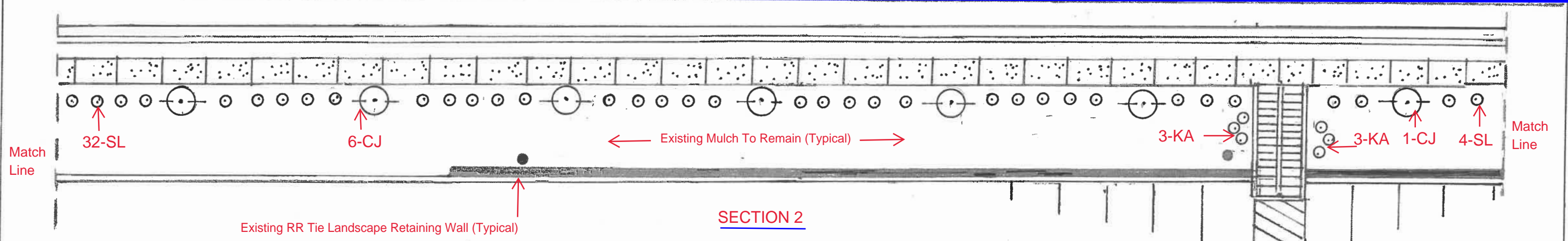
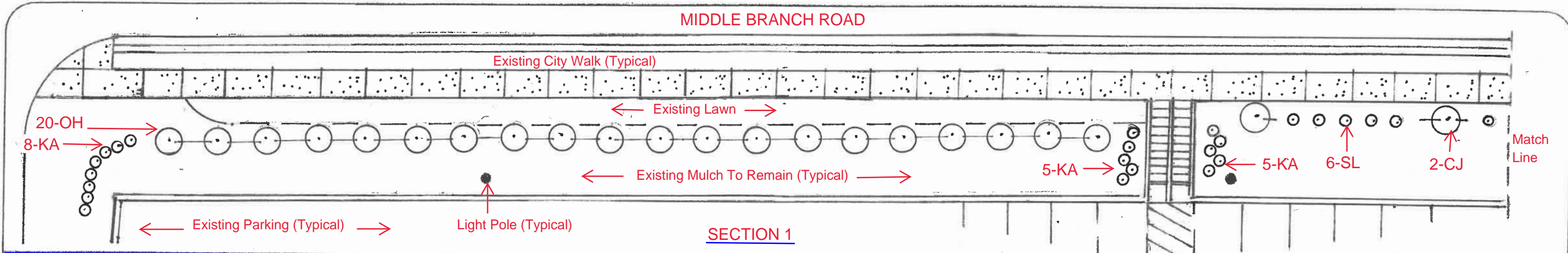
T.I.P. #	---
WBS #	---
FED I.D. #	---
SHEET NO :	L-1
TOTAL SHEET NO :	L-9




NCDOT - ROADSIDE ENVIRONMENTAL UNIT
AESTHETIC ENGINEERING SECTION
 1557 MAIL SERVICE CENTER RALEIGH NC 27699-1557
 PH: 919-707-2935 FAX: 919-715-2554

Century Center Building
 TIP #: Landscape Improvement Project

SHEET DESCRIPTION:	PREL. DESIGN DATE : MAY 30, 2024	Existing Site Master Plan		T.I.P. # -	
	FINAL DESIGN DATE : JULY 26, 2024	Proposed Site Section Areas		WBS # - - - - -	
	Landscape Architect	Azad Atashi		Phone: (919) 707-2951	FED I.D. # - - - - -
					SHEET NO : L-2 TOTAL SHEET NO : L-9



NCDOT - ROADSIDE ENVIRONMENTAL UNIT
 AESTHETIC ENGINEERING SECTION
 1557 MAIL SERVICE CENTER RALEIGH NC 27699-1557
 PH: 919-707-2935 FAX: 919-715-2554

Century Center Building
 Landscape Improvement Project

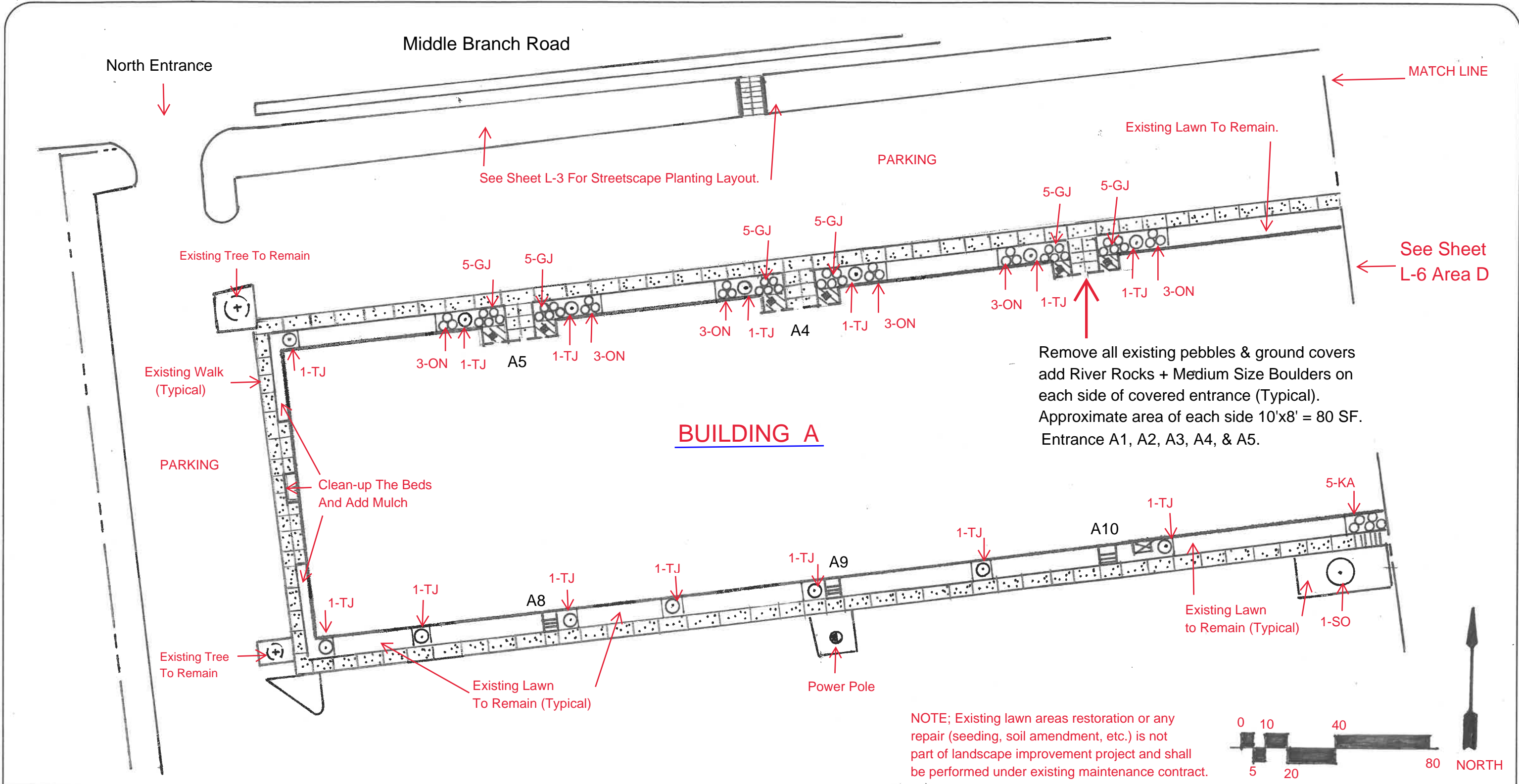
TIP #: - - - - -

SHEET DESCRIPTION:
 PREL. DESIGN DATE: May 30, 2024
 FINAL DESIGN DATE: JULY 26, 2024
 Landscape Architect: Azad Atashi

Area A (Streetscape)
 Landscape Improvement Plan
 SCALE 1" = 20'-0"



T.I.P. # - - - - -
 WBS # - - - - -
 FED. I.D. # - - - - -
 SHEET NO. L-3 TOTAL SHEET NO. L-9



**NCDOT - ROADSIDE ENVIRONMENTAL UNIT
AESTHETIC ENGINEERING SECTION**
1557 MAIL SERVICE CENTER RALEIGH NC 27699-1557
PH: 919-707-2935 FAX: 919-715-2554

**Century Center Building
Landscape Improvement Project**

TIP #: - - - - -

SHEET DESCRIPTION:	PREL. DESIGN DATE: MAY 30, 2024
	FINAL DESIGN DATE: JULY 26, 2024
	Landscape Arch. Azad Atashi

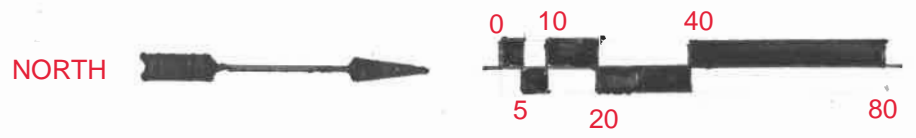
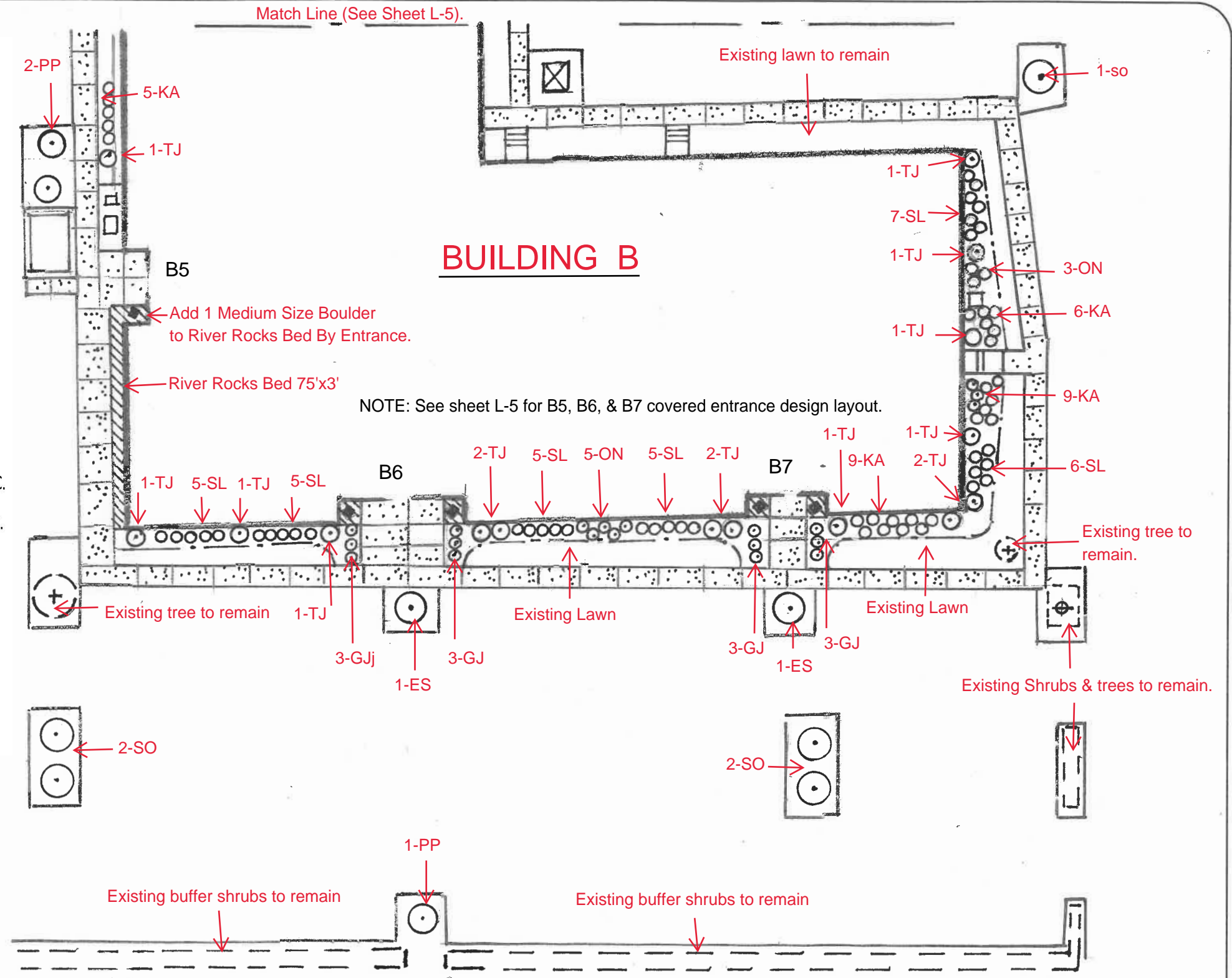
AREA B
Landscape Improvement Plan

SCALE 1" = 40'-0"

T.I.P. #	-
WBS #	- - - - -
FED I.D. #	- - - - -
SHEET NO:	L-4
TOTAL SHEET NO:	L-9

PLANT MATERIAL LIST

KEY	QUANTITY	BOTANICAL NAME	COMMON NAME	CONDITIONS
ES	8	Ilex x attenuata 'Eagleston'	Eagleston Holly	25 Gallon, 7' to 8' High
SO	17	Quercus coccinea	Scarlet Oak	25 Gal. or B/B 2" Cal. 8' High
TJ	65	Juniperus virginiana 'Taylor'	Taylor Juniper	15 Gallon, 5' to 6' High
CM	3	Lagerstroemia 'Dynamite'	Crape Myrtle Red or Eq.	15 Gallon, 5' High
PP	11	Prunus cerasifera	Purple Leaf Plum	25 Gal. or B/B 8' High
CJ	42	Ilex Hybrid 'HL 10-90'	Christmas Jewel Holly	10 Gal. 3' to 4' High
OH	20	Ilex hybrid 'Magland'	Oakland Holly	10 Gallon, 4' High
SL	189	Ligustrum sinense 'Sunshine'	Sunshine Ligustrum	3 Gallon, 18" to 24" High 3' O.C.
ON	41	Nandina domestica 'Seika'	Obsession Nandina	3 Gallon, 14" to 18" High 3' O.C.
GJ	48	Juniperus Procumbens 'Nana'	Japanese Garden Juniper	3 Gallon, 3' O.C.
KA	115	Abelia x grandiflora 'Kaleid.'	Kaleidoscope Abelia	3 Gallon 3' O.C.
CH	26	Ilex cornuta 'Carissa'	Carissa Holly	3 Gallon, 3' O.C.



NCDOT - ROADSIDE ENVIRONMENTAL UNIT
 AESTHETIC ENGINEERING SECTION
 1557 MAIL SERVICE CENTER RALEIGH NC 27699-1557
 PH: 919-707-2935 FAX: 919-715-2554

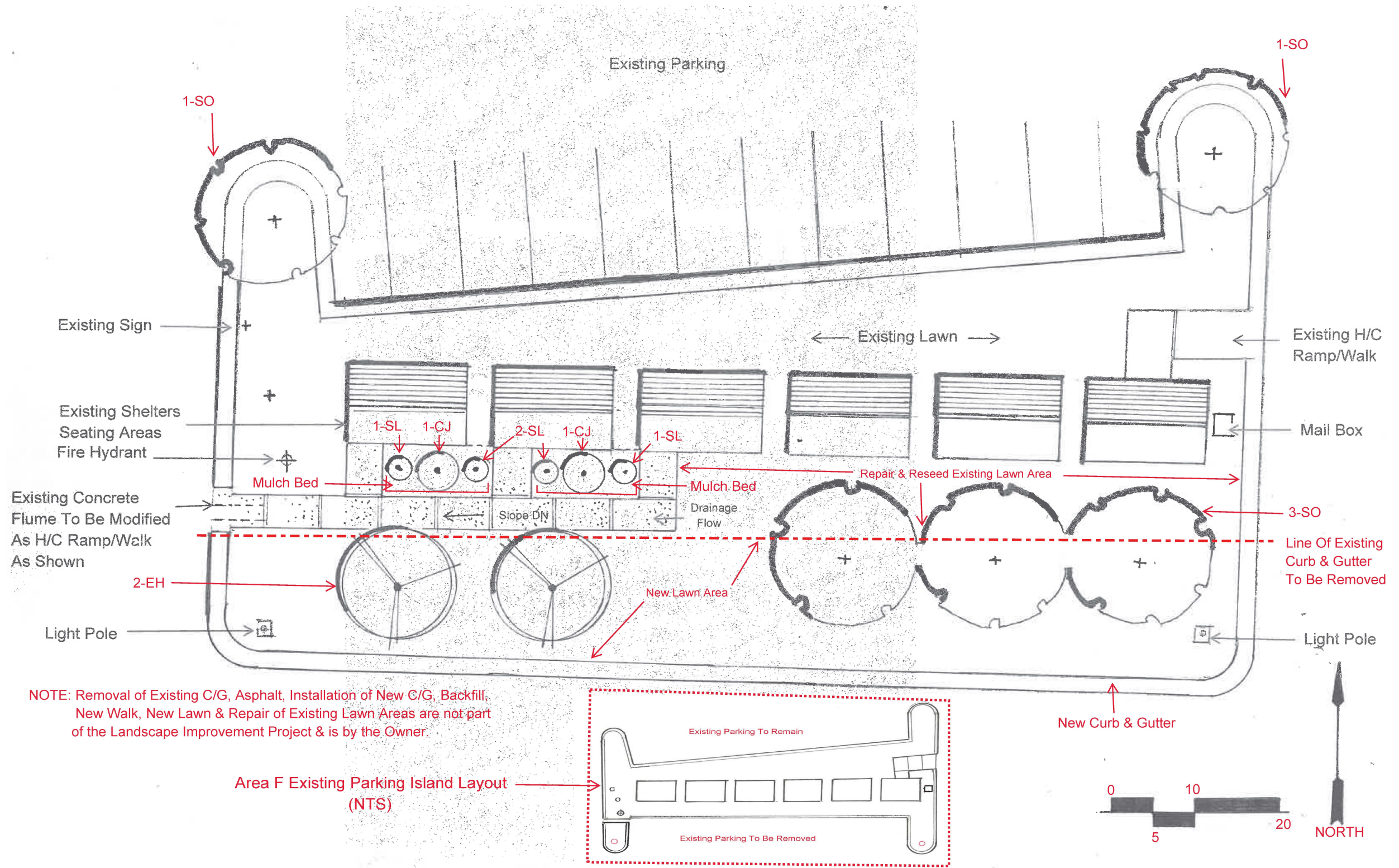
Century Center Building Landscape Improvement Project

TIP #: - - - - -

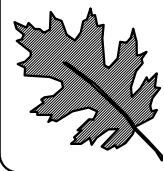
PREL. DESIGN DATE : MAY 30, 2024
 FINAL DESIGN DATE : JULY 26, 2024
 Landscape Arch. Azad Atashi

Area E
 Landscape Improvement Plan
 SCALE 1" = 40'-0"

T.I.P. # - - - - -
 WBS # - - - - -
 FED. I.D. # - - - - -
 SHEET NO : L-7 TOTAL SHEET NO : L-9



NOTE: Removal of Existing C/G, Asphalt, Installation of New C/G, Backfill, New Walk, New Lawn & Repair of Existing Lawn Areas are not part of the Landscape Improvement Project & is by the Owner.

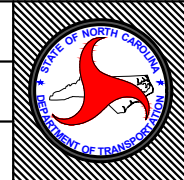


NCDOT – ROADSIDE ENVIRONMENTAL UNIT
 AESTHETIC ENGINEERING SECTION
 1557 MAIL SERVICE CENTER RALEIGH NC 27699-1557
 PH: 919-707-2935 FAX: 919-715-2554

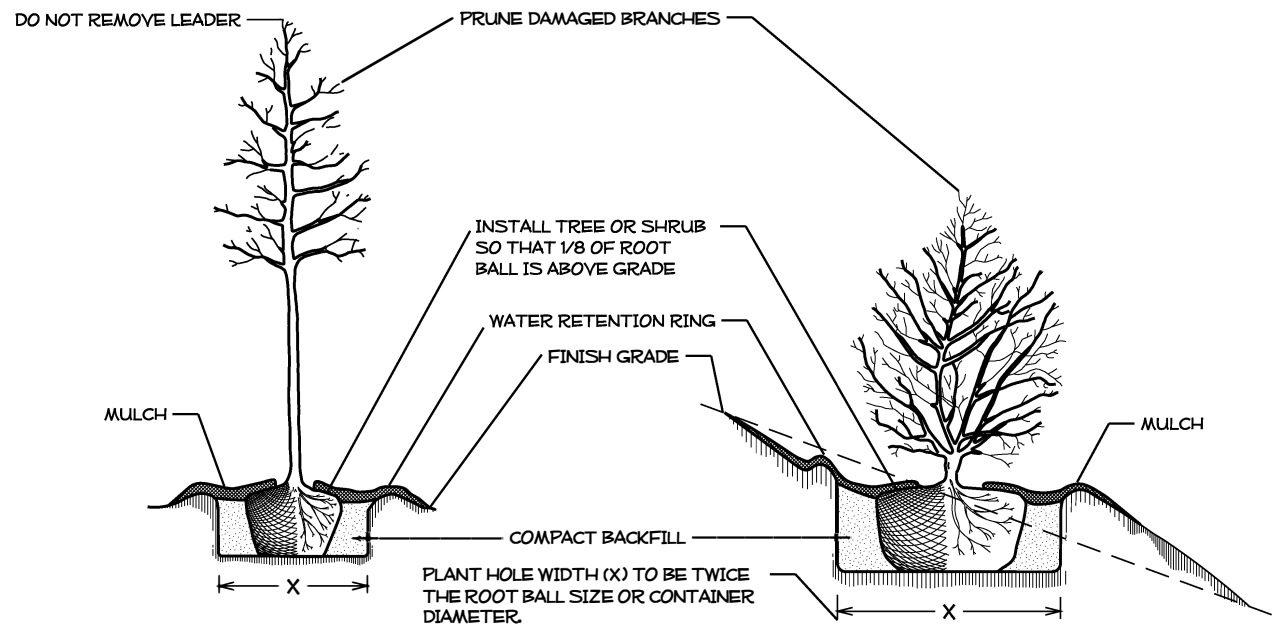
CENTUREY CENTER BUILDING Landscape Improvement Project

TIP #: - - - - -

SHEET DESCRIPTION:	PREL. DESIGN DATE : <u>MAY 30, 2024</u>	Area F Improvement Plan
	FINAL DESIGN DATE : <u>JULY 26, 2024</u>	Landscape Planting Plan
	Landscape Architect: <u>Azad Atashi</u>	

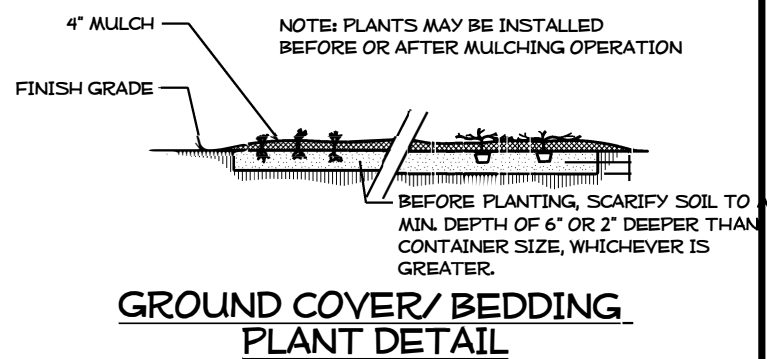


T.I.P. #	-
WBS #	- - - - -
FED I.D. #	- - - - -
SHEET NO :	TOTAL SHEET NO :
L-8	L-9

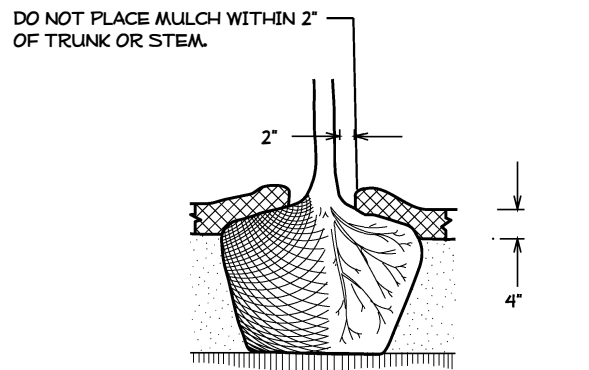


TREE OR SHRUB PLANTING DETAIL
(LEVEL GROUND)

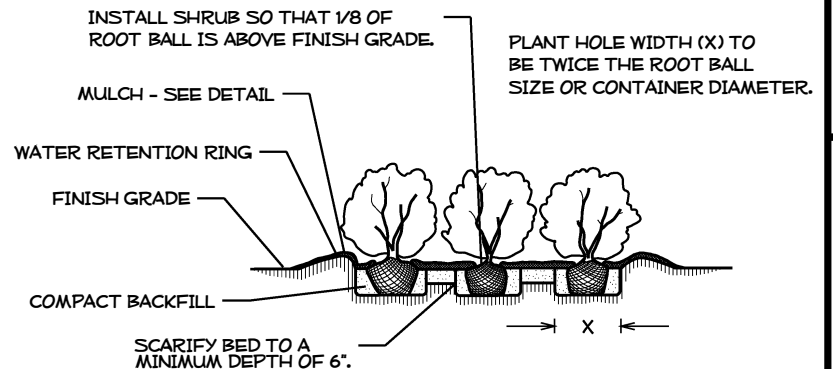
TREE OR SHRUB PLANTING DETAIL
(SLOPING GROUND)



GROUND COVER/ BEDDING PLANT DETAIL

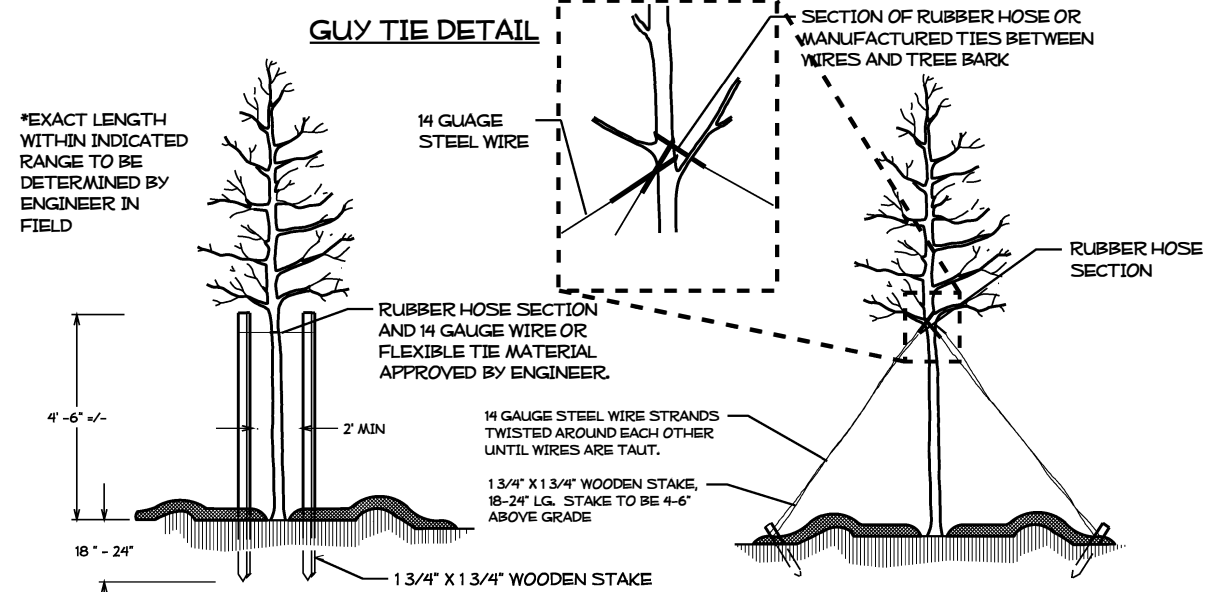


MULCH DETAIL



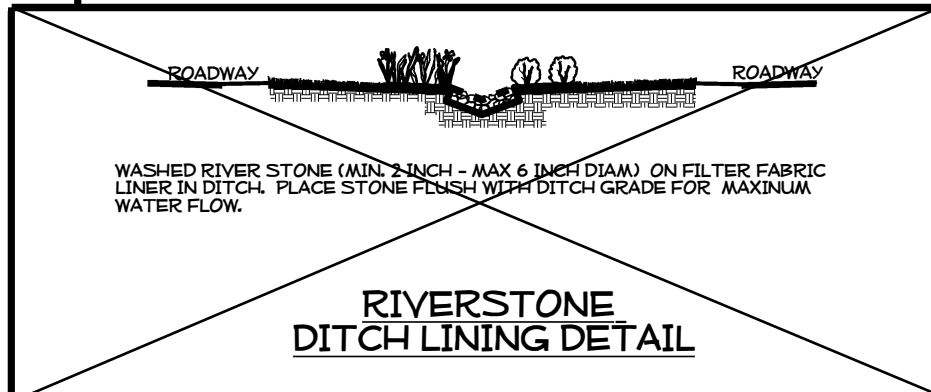
SHRUB BED PLANTING DETAIL

- NOTES:**
- SCHEDULE FOR PLANT HOLE SIZE: PLANT HOLE WIDTH (X) TO BE TWICE THE ROOT BALL SIZE OR CONTAINER DIAMETER.
 - SEE STANDARD SPECIFICATIONS FOR PLANT BED FUMIGATION AND HERBICIDAL TREATMENT.
 - APPLY FERTILIZER AT PLANTING TIME IN THE FORM OF A SLOW RELEASE PELLET OR TABLET. APPLY AT RATE RECOMMENDED BY MANUFACTURER. BOTH RATE AND FORMULATION MUST BE APPROVED BY FIELD ENGINEER PRIOR TO APPLICATION.
 - REMOVE WIRE BASKET AND FOLD BURLAP BACK FROM TOP OF ROOT BALL BEFORE BACKFILLING IS COMPLETE.
 - ALL PRUNING TO FOLLOW STANDARD ARBORICULTURAL PRACTICES AS SPECIFIED BY INTERNATIONAL SOCIETY OF ARBORICULTURE.
 - DO NOT ATTEMPT TO STRAIGHTEN A TREE THAT HAS BEEN PLANTED AT AN ANGLE WITH THE USE OF STAKING OR GUYING. DIG TREE AND REPLANT TO UPRIGHT POSITION.

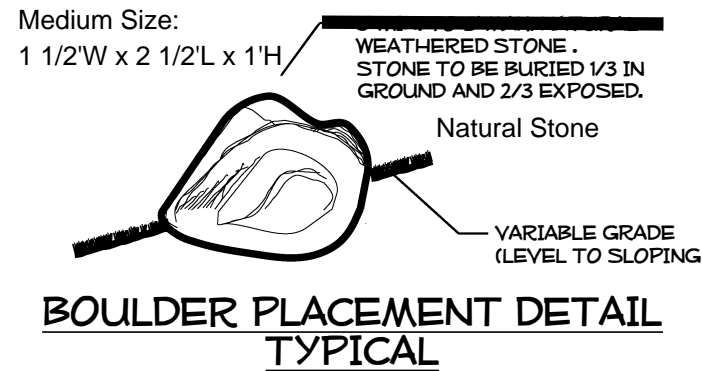


STAKING DETAIL
(TREES 6'-10')
USE AS DIRECTED BY FIELD ENGINEER

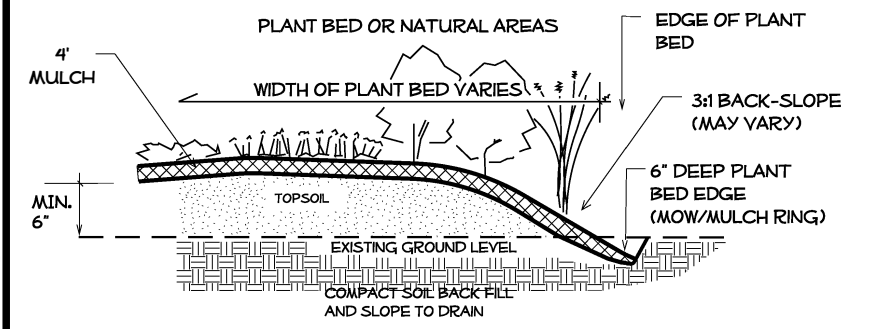
GUYING DETAIL
(TREES 10' OR LARGER)
USE AS DIRECTED BY FIELD ENGINEER



RIVERSTONE DITCH LINING DETAIL



BOULDER PLACEMENT DETAIL
TYPICAL



PLANT BED EDGE DETAIL



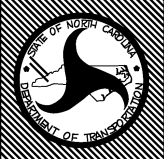
NCDOT - ROADSIDE ENVIRONMENTAL UNIT
LANDSCAPE DESIGN & DEVELOPMENT
1557 MAIL SERVICE CENTER RALEIGH NC 27699-1557
PH: 919-733-2920 FAX: 919-733-9810
HTTP://WWW.NCDOT.ORG/DOH/OPERATIONS/DP.CHIEF.ENG/ROADSIDE/

Century Center Building
Landscape Improvement Project

REU ENGINEER
Azad Atashi
RLA

PREL. DESIGN DATE:	
CHECKED BY & DATE:	AA 05 30, 2024
FINAL DESIGN DATE:	07 26, 2024

PLANTING DETAILS



T.I.P. #	
WBS #	
FED I.D. #	
SHEET NO:	TOTAL SHEET NO:
L-9	L-9